



RMHC[®]
Hong Kong



RMHC[®]
Hong Kong

香港沙田多石村多石街23號

23 To Shek Street, To Shek Village, Shatin, Hong Kong

電話 Tel: +852 2947 8778

傳真 Fax: +852 2947 8780

網址 Website: www.rmhc.org.hk 電郵 Email: rmh@rmhc.org.hk

鳴謝 Special Thanks

印刷製作服務由新洲印刷集團有限公司慷慨贊助

Production and printing service is generously sponsored

by New Island Printing Group Co., Ltd



新洲印刷集團有限公司
NEW ISLAND PRINTING GROUP CO., LTD.



rmhc_hk



RMHCHK



rmhc_hk



Leading with

COMPASSION

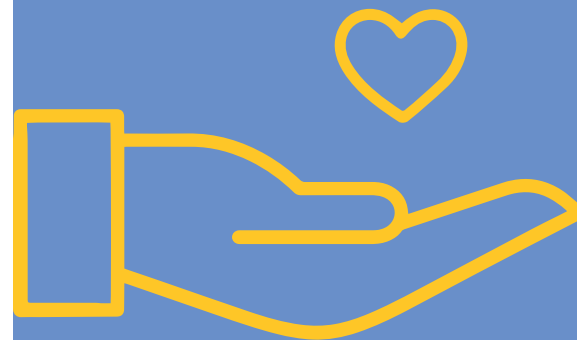
Annual Report
年報 2019



抱負與使命 Vision & Mission

以國際思維提供資源，服務本地孩童及其家庭

Thinking globally, acting locally to
provide resources for children and their families



目錄 Table of Contents

- 1** 主席分享 Chairperson's Sharing
- 2** 總幹事報告 Executive Director's Report
- 3** 董事會 Board of Directors
- 4** 家的團隊 Staff Team
- 5** 凝聚家庭的力量 Keeping Families Close™ Story
- 7** 我們的服務 Our Service and Impact
- 11** 「以家庭為本」帶來正面轉變
"Family-Centered Care" Service Brings Positive Changes
- 14** 全力籌建第二新家舍 New Home New Start
- 15** 家的相聚時光 House Activities
- 19** 義工傾力支持 Volunteers Support
- 22** 籌款活動一覽 Fund Raising Activities
- 25** 麥當勞® 齊心行善 將愛心獻給麥當勞叔叔之家慈善基金
McDonald's® Supports Ronald McDonald House Charities®
- 27** 名人支持 Celebrities' Support
- 28** 感謝各方支持 Acknowledgement of Support
- 31** 財務概覽 Statement of Financial Position
- 33** 支持我們 Support Us



主席分享 Chairperson's Sharing

過去一年，對很多香港人來說均是人生中最具挑戰性的一年。雖然在2018-2019年我們都忙於照顧健康，為工作、事業及未來而打拼。然而縱使面對種種困難，我們仍然心繫社區。全賴您們長久的支持，香港麥當勞叔叔之家慈善基金才得以打開歷史性的新一頁 - 與您一起以愛共建新家舍。

香港兒童醫院於2019年開始提供住院服務，是香港首家兒科專科醫院，致力在臨床服務、科研、教學和培訓方面追求卓越。全球有90%的頂尖兒童醫院都設有至少一項麥當勞叔叔之家慈善基金的服務，為病童家庭提供關懷及支援。我們很高興可以繼續擔當此重要角色，位處觀塘的新家舍毗鄰香港兒童醫院，並設有66間客房，讓我們貫徹以「家庭為本」的服務承諾，讓病童及其家人在面對治療的艱難時刻緊靠在一起。

我們已經在2019年成功實踐了興建第二個家舍的重要里程碑。2019年7月31日，我們正式獲得地政總署署長批出土地。香港麥當勞叔叔之家慈善基金隨即於8月19日取得觀塘地址的使用權，並開展地基工程。我們預計地基工程將於2020年底竣工，而上蓋建築工程亦會在2021年年頭開始。全賴香港賽馬會慈善信託基金慷慨撥款捐助香港麥當勞叔叔之家慈善基金，建築工程能得以順利進行。

我們在過去一年的成就，有賴香港麥當勞叔叔之家慈善基金優秀的工作團隊、熱心的義工，以及各企業夥伴、公、私營機構和社會各界的鼎力支持。您們每一位都是支撐我們家舍的重要支柱，我十分期待與您分享此項新社區設施落成後帶來的喜悅。

Many in Hong Kong will remember the 2018-2019 as being one of the most challenging years in their lifetime. We spent the year preoccupied with our health, our jobs, our businesses, and our futures. Yet, amidst the many concerns, we never forgot our community. Thanks to you, our longstanding supporters, RMHC® Hong Kong has made an important and positive contribution to this chapter in our history: a new House, built with you, built with love.

Opened for inpatient service in 2019, the Hong Kong Children's Hospital is Hong Kong's first-ever specialist hospital for children. It was established with the vision to strive for excellence in clinical service, research, teaching, and training. At 90 percent of the top children's hospitals across the world, at least one RMHC program provides

黃馮慧芷女士
香港麥當勞叔叔之家慈善基金董事會主席
全球麥當勞叔叔之家慈善基金董事會委員

Ms. Grace Fung Oei

Chairperson of
Ronald McDonald House Charities Hong Kong

Global Board of Trustees
Ronald McDonald House Charities

care and support for families. RMHC Hong Kong is proud to play this vital role here through our new House near the Hong Kong Children's Hospital. Our second house, a 66-room facility in Kwun Tong, will enable us to deliver on our promise of family-centered care by helping even more families stay close together and involved in their beloved child's medical journey.

We have successfully achieved our key project milestones for 2019 for the second House. The land grant was formally executed by the Director of Lands on 31 July 2019. On 19 August 2019, RMHC Hong Kong took possession of the Kwun Tong site and commenced construction of the foundation. We expect foundation construction to be completed by the end of 2020 and superstructure construction to kickstart in early 2021. Supported by a generous grant for construction by The Hong Kong Jockey Club Charities Trust, RMHC Hong Kong continues to make good progress in this passion project.

Our accomplishments over the past year are the result of extraordinary commitment across the RMHC community, from our wonderful staff and dedicated volunteers, to corporate partners, public and private organizations, and individual members of our society. You are the pillars that hold up the roof of our House, and I look forward to celebrating the fruition of this new community facility with you.



總幹事報告 Executive Director's Report

香港麥當勞叔叔之家慈善基金一直秉持「以家庭為本」的信念，堅定前行，透過建立、尋找及支援不同項目，直接改善病患孩子及其家庭的福祉，讓病童父母在孩子接受治療期間，仍可常伴左右，省卻舟車勞頓之苦，以及飲食住宿、往返醫院和工作地點的交通等各項開支及時間。

過去二十多年，我親身見證了這個「家」對患病兒童及其家人之重要，我們不斷堅守信念為醫院正接受治療的病童及其家庭提供「家以外的家」的服務。最近，我們進行了一項對患病兒童父母之壓力調查，目的是希望了解病童家人在入住麥當勞叔叔之家前後的生活及情緒方面的變化。調查發現，他們在入住後，「奔波醫院身心疲倦」之比率下跌78%、「出現負面情緒」比率減少76%、「家庭經濟壓力增大」的比率降61%、「缺乏時間照顧其他子女」的情況減少58%、「與配偶或家人關係變差」的比率減少44%。

而更重要的是，受訪家長對我們提供的各種活動，以及義工們的支援，都表達出感激謝意。這證明了麥當勞叔叔之家透過結合「以家庭為本」的臨時住宿、各種義工活動之心理社交支援的獨特模式，成功為每一位受惠者帶來了正面積極的轉變。憑著我們繼續擴展服務的夢想，位於觀塘的第二間麥當勞叔叔之家建造工程已寫下重要的里程碑，我們熱切期待繼續為更多病童提供服務，讓他們迎接更光明的將來。

在2019年4月，我們在香港兒童醫院推出了一項全新計劃「家FUN車」醫院探訪計劃，以「家FUN熊」為主題，「家FUN熊」是由一位曾經入住麥當勞叔叔之家的家長設計，為長時間在醫院接受治療的病童及其家人增添歡樂，協助他們積極和正面地面對治療和康復的過程。「家FUN熊」乘坐「家FUN車」穿梭不同病房，滿載著親子教具，如「家FUN熊」故事書、遊戲冊及畫冊等，讓病童以輕鬆一點的心情渡過艱難時間。

我們的團隊深明建立一個關愛、體恤別人的社區，是人與人之間孕育希望、愛心和療癒的關鍵，因此我們於2019年11月舉行了傳媒簡報會，向社會分享了我們的壓力調查結果及願景，藉此加深市民對香港麥當勞叔叔之家服務需求的認識。

分享海倫·凱勒的一句話，「一個人能做的不多，但一群人可以創造無限可能」。我深信只要眾人團結，百事便能成功，過去一年的成就正正是我們團隊合作的成果，當中很多人都值得表揚。我在此衷心感謝我的團隊、贊助人和義工的無私奉獻和慷慨支持。全賴您們，我們開展第二間麥當勞叔叔之家的夢想將得以實現。



RMHC® Hong Kong is driven by its family-centered care mission to create, find and support programs that directly improve the well-being of children and their families. We keep families close to their children receiving medical care, while saving them money in accommodation and food as well as the logistical costs of travelling to and from the hospital or of taking time of work.

Over the past few years, as RMHC Hong Kong has continued to provide overnight stays to the families of sick children receiving care at leading hospitals in the territory, I have seen first-hand the impact our House can have on families' lives. We recently conducted a survey of parents of sick children currently or previously staying in Ronald McDonald House® (RMH) to explore the changes in their lives and emotional states after they moved in. The survey revealed that the "fatigue they experienced from daily travel to the hospital" and "negative emotional occurrences" fell by 78% and 76 % respectively. Respondents also reported a 61% decrease in "rising family tension" and a 58% decrease in "lack of time to care for siblings", while "increase in family financial burden" declined by 44%.

More importantly, parents expressed appreciation for the wide variety of activities organized, and the volunteers who were there for them in their time of need. This demonstrated the positive impact RMH has on the lives of its residents with its unique combination of accommodation and psychological and social support. Our dream is to extend this positive impact further. As our second House in Kwun Tong marks key construction milestones, we look forward to opening the doors to a brighter tomorrow for more sick children than ever before.

We also introduced a new program, the RMHC hospitality cart, at the Hong Kong Children's Hospital (HKCH) in April 2019. Featuring the Caring Teddy, a character created by our Love Companions, the cart travels around the hospital to help sick children and their families deal positively with illness. The cart is filled with resources and comfort items, including Caring Teddy storybooks, educational games and drawing kits, with the aim of making the long hours a little easier.

At RMHC, we have always recognized the importance of building a caring and compassionate community to nurture hope, love and healing in ourselves and others. In November 2019 we held a media briefing to share our vision with the community and to foster greater understanding of the needs of the RMH service in Hong Kong.

As the famous author Helen Keller said, "Alone we can do so little; together we can do so much". Nothing great is accomplished alone. Our achievements over the year were the result of a team effort, for which many deserve credit. My heartfelt thanks to my team, all donors and volunteers for their invaluable and treasured support. With your help, our dream of the second House will be fulfilled.

黃婷婷女士
香港麥當勞叔叔之家慈善基金總幹事

Ms. Iris Wong
Executive Director of
Ronald McDonald House Charities Hong Kong



董事會 Board of Directors

劉關麗賢女士
Mrs. LAU Kwan Lai Yin, Jane
董事會成員及司庫 Director & Treasurer (resigned 14 Jun 2019)

黃福霖先生
Mr. WONG Fook Lam, Raymond
董事會成員及司庫 Director & Treasurer

梁廷勳教授
Prof. LEUNG Ting Fan
董事會成員 Director

黎韋詩小姐
Ms. LAI Wai Sze, Randy
董事會成員 Director

蔡靖民先生
Mr. CHOY Jing Man, Ian
董事會成員 Director

黃馮慧芷女士 Ms. Grace Fung OEI
董事會主席 Chairperson

張添珞小姐
Ms. CHEUNG Tih Loh, Karen
董事會成員 Director

何翠萍小姐
Ms. HO Chui Peng, Michelle
董事會成員 Director

陳志峯教授
Prof. CHAN Chi Fung, Godfrey
董事會成員 Director (appointed 1 Oct 2019)

包偉龍先生
Mr. Robert Le Roy VALLONE
董事會成員 Director

衛紹宗先生
Mr. WAI Siu Chung, Dominic
董事會成員 Director

家的團隊 Staff Team



黃婷婷 Iris WONG
總幹事 Executive Director

鄭麗彤 Regina CHENG
發展總監 Director of Development

邱紹彰 Keith YAU
院舍經理 House Manager

許青思 Elaine HUI
院舍助理經理 Assistant House Manager

李淑明 Olivia LEE
家庭及住客事務主任 Family & Guest Officer

林倩盈 Jamie LAM
項目主任 Project Coordinator (till Mar 2019)

梁順玲 Candy LEUNG
院舍總務員 House Attendant

李福添 Tim LEE
院舍總務員 House Attendant (till May 2019)

廖劍云 Kim LIU
院舍總務員 House Attendant (joined May 2019)

呂綽成 Damon LUI
義工項目籌劃經理 Manager of Volunteer Program (joined Mar 2019)

楊淑婷 Hana YEUNG
義工項目助理經理 Assistant Program Manager (joined Oct 2019)

周杏瑤 Karina CHAU
義工項目主任 Volunteer Program Officer (till Oct 2019)

尹靜筠 Carol WAN
傳訊經理 Communications Manager (till Mar 2019)

梁蕤蕤 Kelly LEUNG
傳訊經理 Communications Manager (joined Jan 2019)

鄺錦榮 Ricky KWONG
傳訊助理經理, 網絡推廣 Assistant Communications Manager, Digital Marketing (joined Sep 2019)

羅慧芬 Cherry LAW
籌款經理 (活動) Fundraising Manager, Events

黃卓欣 Cherry WONG
籌款主任 Fundraising Officer

周敏儀 Candy CHAU
籌款助理 Fundraising Coordinator (till Nov 2019)

譚美湄 Mabel TAM
財務經理 Finance Manager

蕭虹 Ivory SIU
會計員 Accountant

張慧詩 Grace CHEUNG
人事及行政經理 Human Resources & Administration Manager

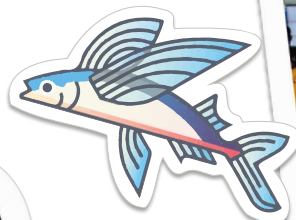
李啟灃 Aqua LEE
資訊科技及行政主任 IT & Administration Officer

黃蘭惠 Ciwa WONG
行政助理 Administration Assistant (till Sep 2019)

阮森螢 Anita YUEN
行政助理 Administration Assistant (joined Oct 2019)



凝聚家庭的力量 Keeping Families Close™ Story



今年15歲的欣怡患有唐氏綜合症，一出生就需入住深切治療部，受盡肉體折磨 - 兩個月大因心漏症做了心臟手術；三個月大時體重不到4公斤，後來醫生發現欣怡的十二指腸塞了，又做了一次緊急手術，令她整整半個月都不可以進食，長期要插着條喉管不可以喝奶；加上欣怡爸爸和外公都不接受唐氏小朋友，令欣怡媽媽十分徬徨，曾一度想過放棄女兒。

欣怡看似一直被上天捉弄，三歲時更被確診急性淋巴性白血病（血癌）。在她留院數個月期間，媽媽一直寸步不離，沒有離開過醫院；直至社工轉介她們一家入住麥當勞叔叔之家，生活才出現曙光。家舍的全面支援給予她們舒適寧靜的「家以外的家」休養之餘，更有各項興趣班及活動，讓她們足不出戶都可以維持消閒、學習及社交生活。欣怡在媽媽悉心照料及家長們的互相照顧下逐漸康復，期間更發掘了她的游泳天分。十年後，欣怡已由「藥煲」蛻變成「小飛魚」，去年更代表香港遠赴加拿大參加世界唐氏游泳錦標賽，奪得一金一銀佳績外還創下七個亞洲紀錄。回想住在家舍時，家長們互相扶持、義工的關懷和陪伴、家舍職員如家人般的安慰和照顧都令兩母女放鬆不少，欣怡媽媽甚至一早把麥當勞叔叔之家視作娘家呢！多年來一直回來做義工，以過來人身份幫助同路人。

香港仍然有很多正與頑疾對抗的病童家庭，他們同樣需要香港麥當勞叔叔之家的服務。請繼續支持我們的工作，在病童家庭最有需要的時候扶一把，讓他們得到全面支援，捱過最艱難的時期。

15-year-old Yan Yi suffers from Down Syndrome. She was admitted into the Intensive Care Unit for couple months shortly after she was born. When Yan Yi was only 2 months old, she had a heart surgery because of atrial septal defect. Worse still that Yan Yi's duodenum is blocked and had another emergency surgery. She weighed only 4kg after surgeries, she could not eat or drink and was tube-fed for 2 weeks. Abandoned by her families, Yan Yi's maternal grandfather and father did not accept her, which made her mom Mrs. Yung wanted to abandon her daughter at one point.

Yan Yi has physically suffered from numerous illness since her birth, she was diagnosed with Acute Lymphoblastic Leukemia when she was 3 years old. Mrs. Yung did not leave Yan Yi's bedside during her stay in hospital for a few months. Yan Yi seemed destined to hit rock bottom - until a social worker's timely referral into Ronald McDonald House® (RMH) changed her ill fate, dawn of a new day. RMH offers all-round support to Yan Yi's family. During this time, they were able to enjoy different kinds of activities, and mutual support from other parents in the House. Yan Yi transformed from a sickly child to a competitive swimmer. She won a gold and a silver medal, and broke 7 Asian records in the Down's Syndrome World Swimming Championships in Canada last year. Looking back to their stay in RMH, parents supporting each other, volunteers' visit and staff's comfort make Yan Yi and her mom became a lot more relaxed, they are extremely grateful to RMH, they have been volunteering for the past 10 years and see RMH is their second home.

More families like Yan Yi's need the RMHC® Hong Kong service when they are fighting against a life-threatening battle. Please continue showing your support, give these families with sick children a big hand in their most difficult time, to provide all-round service and helped them to weather the storm.



我們的服務 Our Service and Impact

在2019年.....
In the Year of 2019...

入住率
Occupancy rate

94.8%

為病童和家人提供住宿
Provided for sick children
and their families

7,958

晚 nights

義工服務時數
Volunteer hours served

8,476

小時 Hours

服務人數「家FUN車」
Number of people served
(Hospitality Cart)

350

人 People

服務人數 (住宿在麥當勞
叔叔之家的病童和家人)

Number of people served
(children & families at RMH®)

1,053

人 People

3,657

人 People

服務人數
(家舍服務包括日間病童)

Number of people
served (house services
including outpatients)

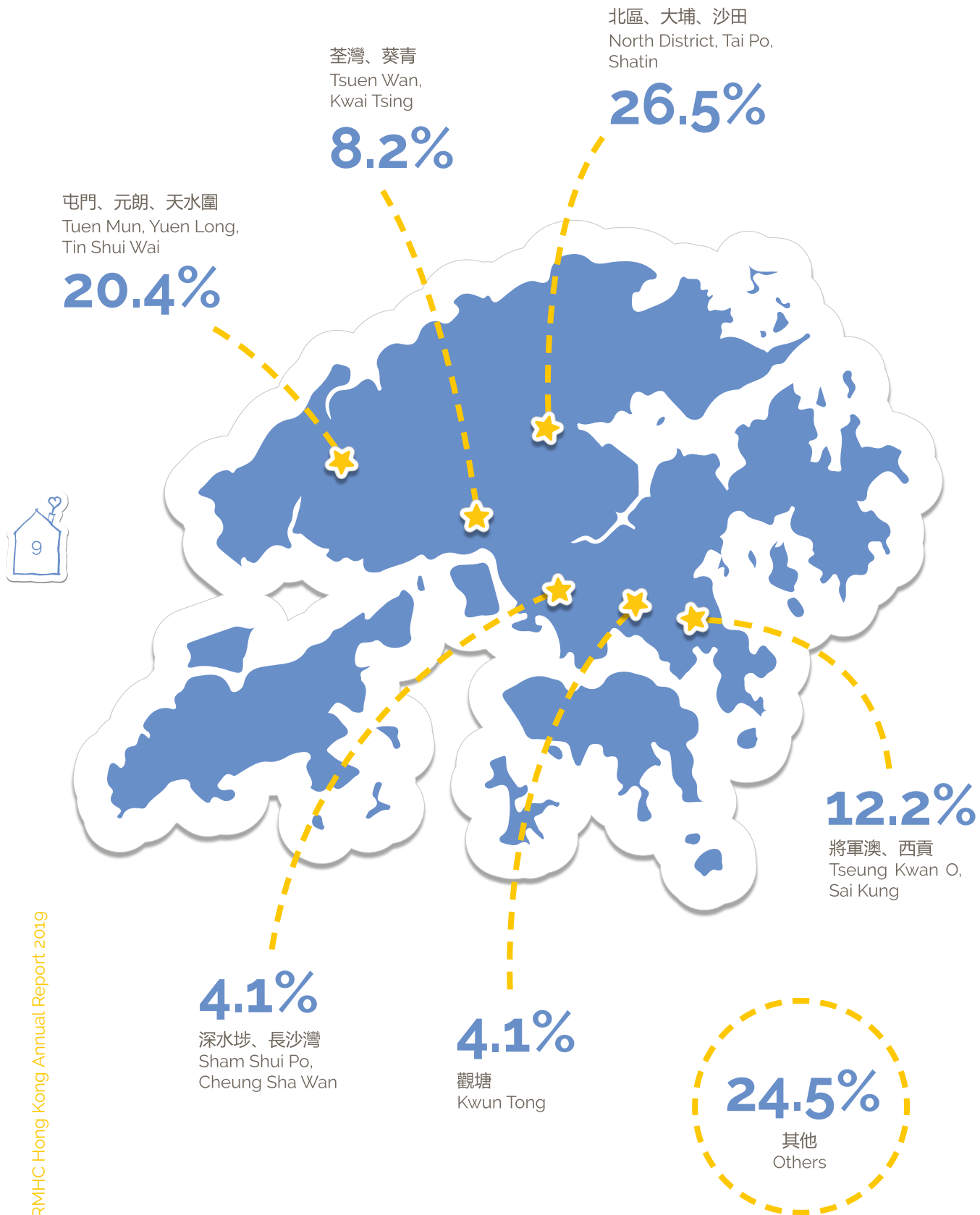
服務人數 (往返香港兒童醫院的穿梭巴士安排)
Number of people served
(Shuttle Bus Service -
RMH to and from HKCH)

8,558

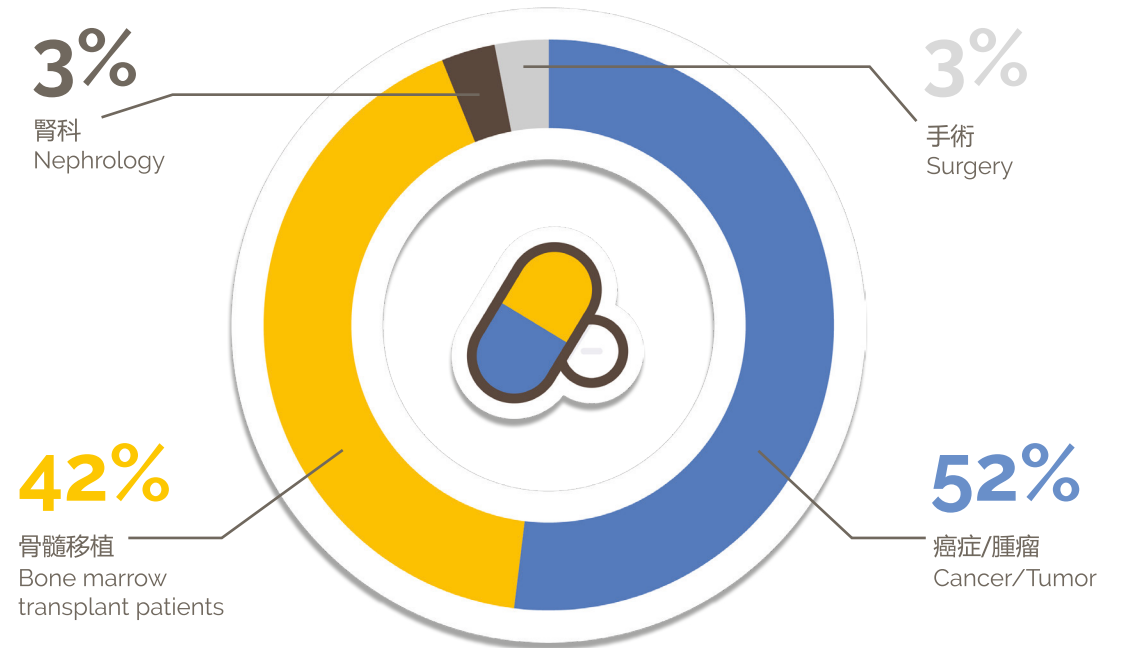
人 People



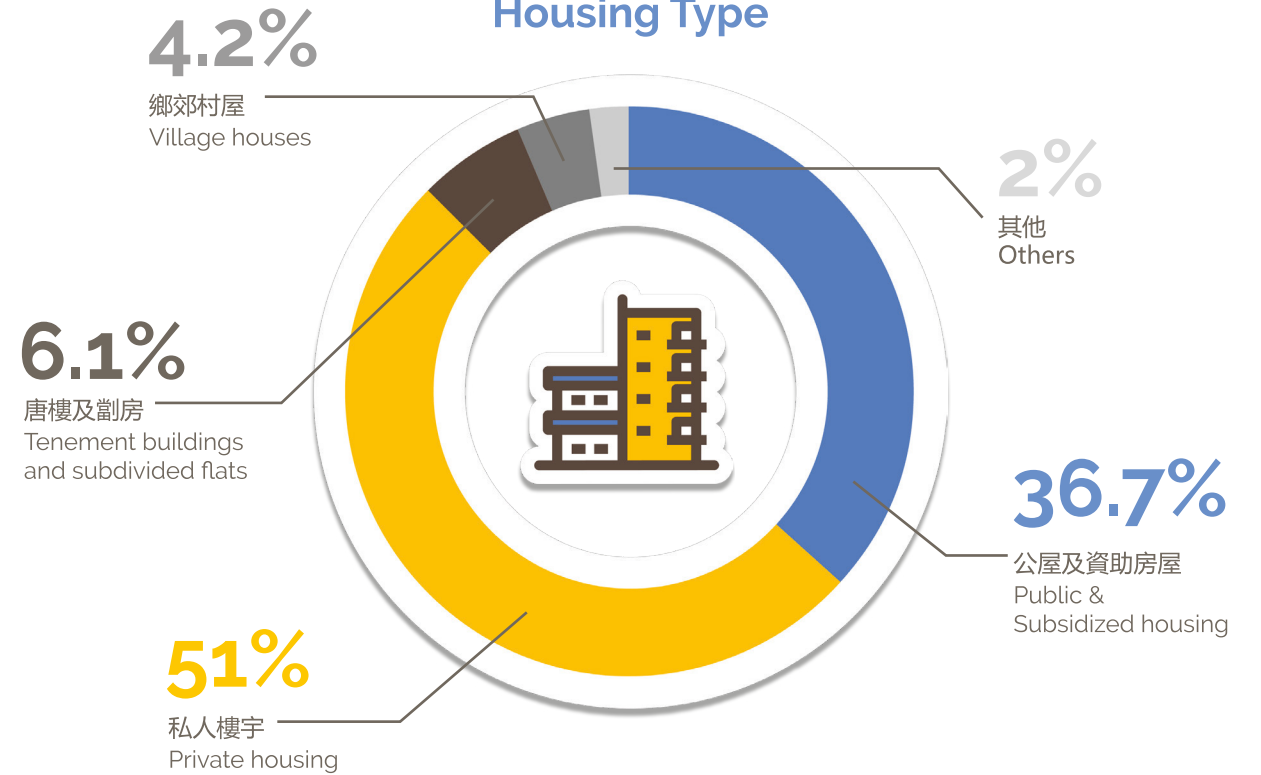
入住家庭的居住地區 Where are our Families from



入住病童病症統計 Patient Diagnosis



入住家庭的住屋狀況 Housing Type



「以家庭為本, 帶來正面轉變」 "Family-Centered Care" Service Brings Positive Change

「以家庭為本」的服務及回饋社區概念

麥當勞叔叔之家不單提供一個住宿地方。作為實踐「以家庭為本」服務理念的先行者, 我們會因應病人和其家庭狀況, 以及社會上的需要去提供適切服務。透過推動這種協作模式, 締造滿載愛心及支援的環境, 讓社會充滿愛與關懷。

A "Family-centered care" Service Model

Ronald McDonald House® is more than a place to stay. Having pioneered the concept of providing "family-centered care," we provide services that cater the needs of young patients and their families. Beyond individual patient care, we also look into the capabilities and needs of the community. With this collaborative approach, the House shall create a caring and supportive environment for our guests.



病童父母壓力調查

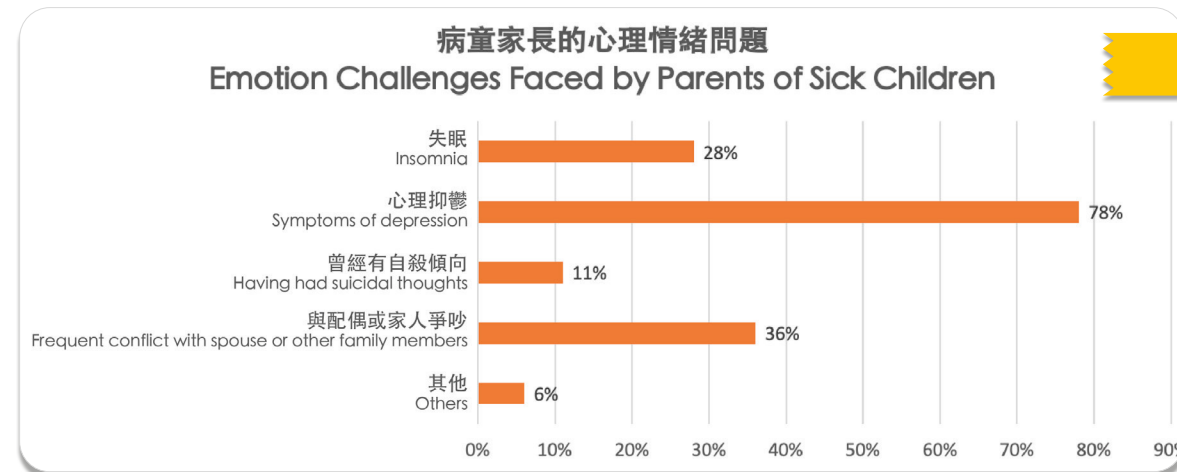
香港麥當勞叔叔之家慈善基金在2019年8月至9月期間進行病童父母壓力調查, 結果顯示病童家長在生活及心理上面對四大難關 - 舟居勞頓、情緒困擾、難以兼顧家庭以及經濟壓力。

調查指出, 接近九成受訪者每日最少探望子女一次, 超過六成父母每星期探病次數更多達13次或以上。大部分家長每次探病來回交通需要兩小時或以上, 有兩成多更需四小時或以上。超過八成家長表示子女患病後, 加重了家庭經濟壓力。

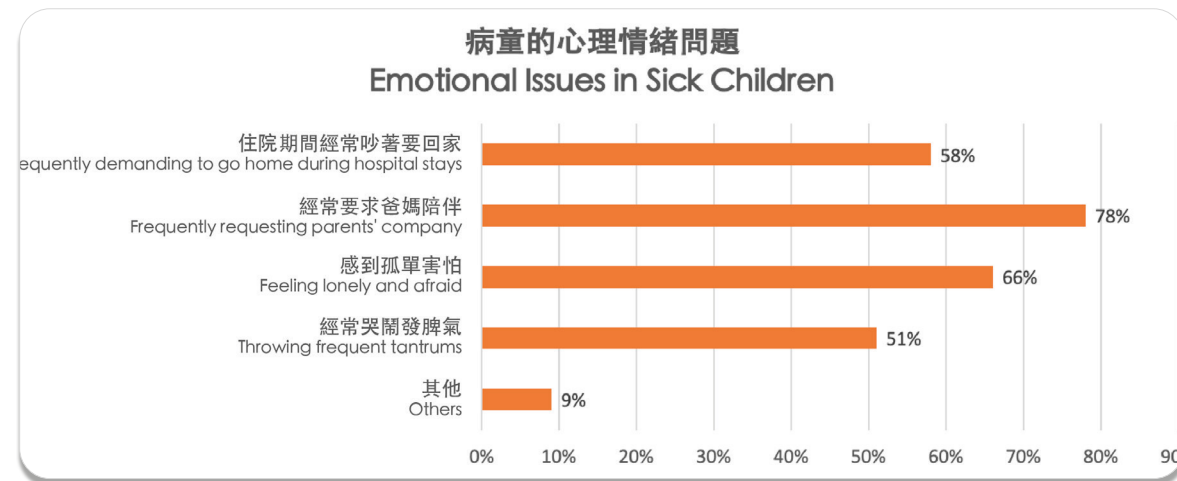
Study on Parental Stress in Families of Seriously Ill Children

Ronald McDonald House Charities® Hong Kong conducted a study on parental stress in families of seriously ill children in August and September 2019. The study reveals that parents face four main challenges, including lengthy commutes, emotional distress, conflicting priorities, and financial pressure.

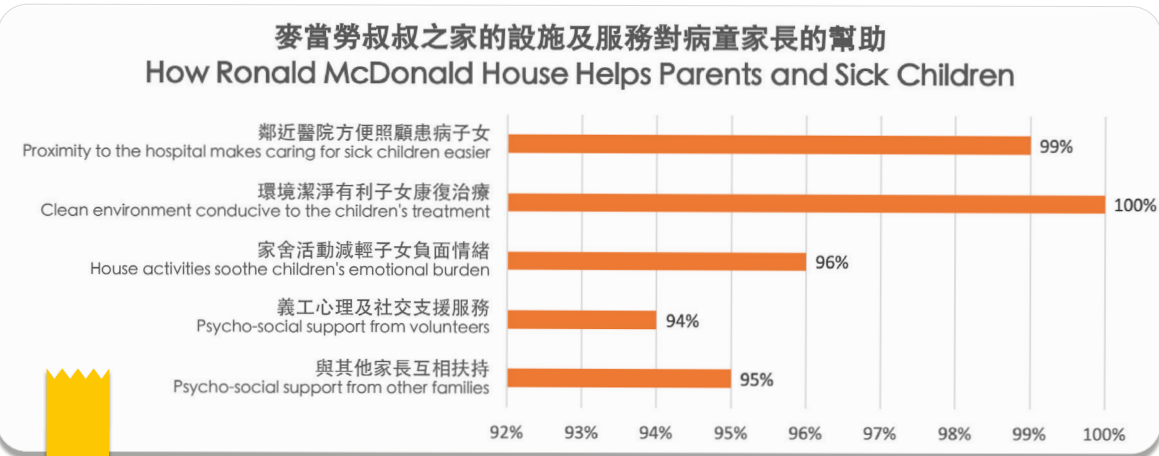
The study reveals that close to 90% of respondents visit their children in the hospital at least once daily, with 62% making 13 or more hospital visits each week. Most of the parents interviewed travel 2 hours or more each day to and from the hospital, with 21% saying they spend more than 4 hours a day on their commute. More than 80% of the parents interviewed report an increased financial burden on the family after their children feel ill.



近八成病童家長有抑鬱症狀
Close to 80% of parents developed symptoms of depression

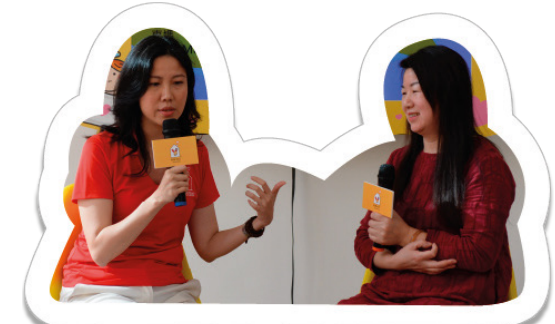


四名病童中就有三名經常要求爸媽陪伴
Three out of four hospitalized children frequently requesting parents' company.





全力籌建第二新家舍 New Home New Start



旅程的新一頁 – 第二間麥當勞叔叔之家

香港麥當勞叔叔之家慈善基金董事會成員兼香港中文大學醫學院兒科學系系主任梁廷勳教授表示社會對病童家庭面對困難不容忽視，並提倡麥當勞叔叔之家「以家庭為本」的服務模式，可為病童家庭帶來正面轉變，讓病童及其家人在生理和心理兩方面得到更佳照顧，全方位幫助他們度過人生中的艱難時刻。

香港麥當勞叔叔之家慈善基金一直因應社會變化，提升服務水平和範圍，致力滿足病童需要。香港兒童醫院於2019年12月正式投入服務，陸續提供400張兒童病床，我們將於毗鄰香港兒童醫院的政府觀塘地皮，建設第二間麥當勞叔叔之家。第二間麥當勞叔叔之家預期能每年服務額外1,200個病童家庭，為香港兒童醫院的患病小朋友及家人提供更適切的支援及服務。

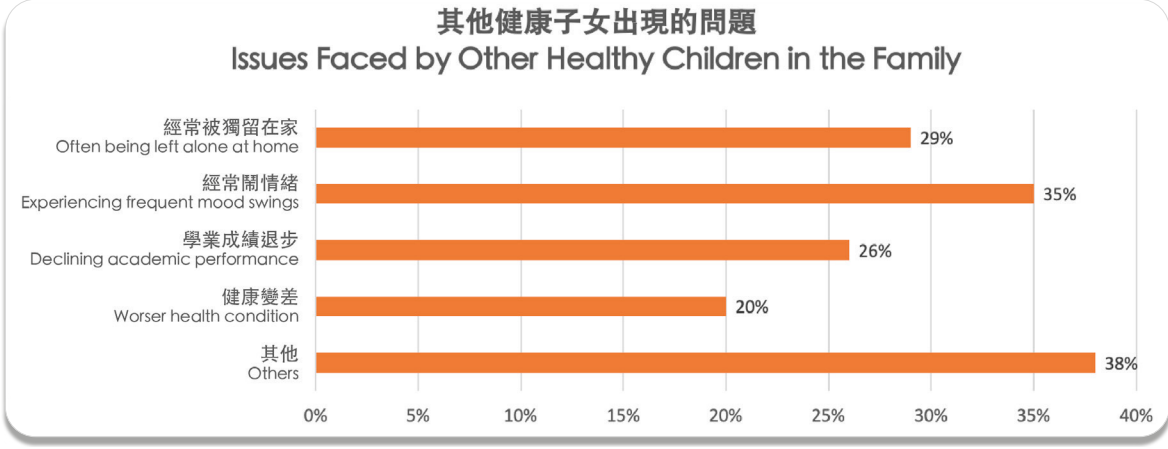
在此，我們衷心感謝香港賽馬會慈善信託基金撥款3億8,700萬元，支持第二間麥當勞叔叔之家的建築費用。與此同時，我們現正進行多項籌款活動，作為兩間家舍的營運經費儲備，期望社會各界能踴躍捐助。

Embarking on a New Journey – The Second Ronald McDonald House®

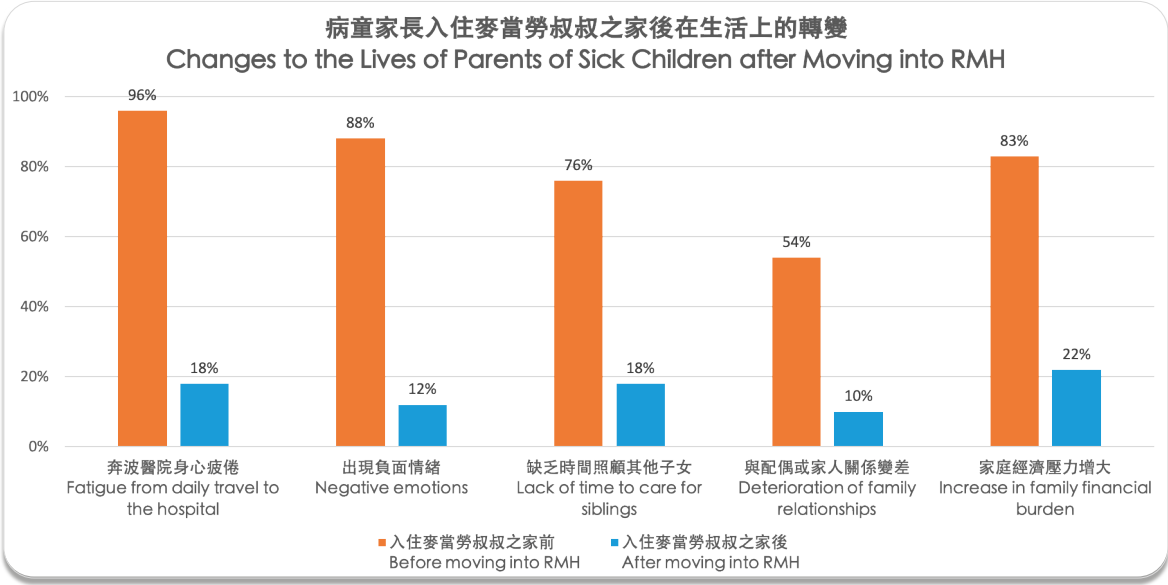
Professor Leung Ting Fan, Director of Ronald McDonald House Charities® Hong Kong and Chairman of the Department of Paediatrics at the Chinese University of Hong Kong, said: "This study reveals that families with severely ill children generally face four main challenges, and are strained both physically and emotionally. This is a serious social problem that cannot be ignored. Ronald McDonald House's "family-centered care" service model can bring positive change to the lives of these families, and give them access to the right physical and emotional care during a difficult time."

RMHC Hong Kong has been catering the needs of sick children efficiently, continuously enhancing our service quality and coverage. In response to the commencement of the Hong Kong Children's Hospital in December 2019, we are glad to announce the kick-off of the second House neighbouring the hospital at Kwun Tong. It is expected to house 400 beds for children, hopefully our capacity of an addition of 1,200 beneficiary families could deliver adequate services to these children.

We are genuinely grateful to be backed by The Hong Kong Jockey Club Charities Trust which has generously donated \$387 million to help build the second Ronald McDonald House. Meanwhile, we also welcome donations from the community via our ongoing fundraising activities to support the operation of the two homes in the future. Every support matters a lot to our guests.



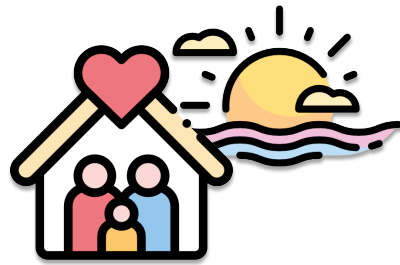
其他健康子女的生活亦受影響
The wellbeing of healthy siblings is also affected



結果顯示病童家庭入住麥當勞叔叔之家後，生理及心理難關均有所改善
The survey shows that since moving into the Ronald McDonald House, parents saw improvements in many areas of their lives



家的相聚時光 House Activities



香港麥當勞叔叔之家慈善基金一直致力為重病兒童及其家人提供「家以外的家」。除提供住宿，我們會邀請義工及社區伙伴，定期舉辦各類活動予入住家庭，為他們在麥當勞叔叔之家的生活增添色彩。曾入住家舍並已康復的小孩及其家人（愛心伙伴）亦會經常回來參加活動，跟老朋友敘舊之餘，同時支持現居於家舍的家庭。

Ronald McDonald House Charities® (RMHC) Hong Kong has been endeavouring to promote a "home away from home" environment to support sick children and their families. Besides providing reassuring accommodation, we also invite warm-hearted volunteers and community partners to cater to their physical and emotional needs through engaging activities. We are also grateful to have our Love Companions, who shared similar experiences as our current members, to offer their love and support while visiting and carrying out activities.



打掃家舍 House Keeping

我們定期帶領義工團隊清潔家舍，給入住家庭舒適而整潔的環境，讓他們安心暫住。

Leading volunteer groups, we clean the House regularly to maintain a tidy and hygienic environment for ill children.



15



美食分享 House Meal Program

社區夥伴和義工定期到訪家舍為入住家庭烹調色、香、味俱全的豐富營養大餐，為大家的的生活增添「味道」！

Savoury and healthy meals are "must-have"s for our children and families. Thank you, talented volunteers!



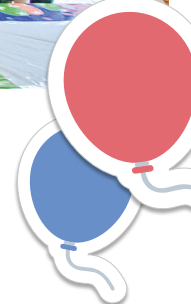
16



生日會 Birthday Parties

每兩個月舉行一次的生日會是病童最期待的活動之一。義工每次都會準備生日蛋糕和各式小食，當然少不了送給小壽星們的生日禮物。

Our bi-monthly birthday parties are one of the loudest days in the House! Every RMHC® child will receive a big piece of delicious birthday cake and a surprising present.



節日派對 Festival Celebrations

無論大小節日，家舍都充斥着濃濃的節日氣氛。我們與義工團體合辦節日慶祝活動，如農曆新年團年飯和聖誕派對等，讓病童及其家人一同歡度佳節。

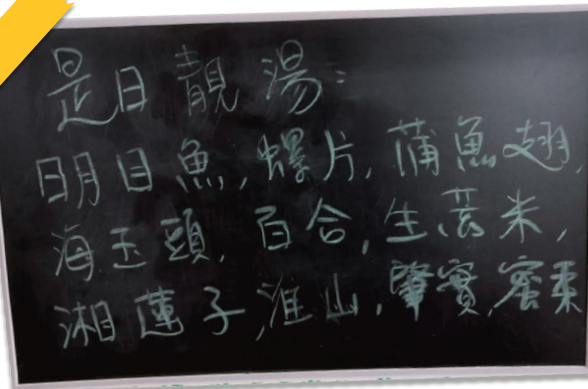
During festivals, we organize big parties with different volunteer groups and allow the sick children and their families in the house to have a merry time together.



家有「營」廚 Love Companion Soup Making

「愛心伙伴」在每月第一個星期五都會來家舍為入住家庭烹調營養湯水。

Love Companion volunteers visit the House on the first Friday of every month to make tasty and nutritious soup for House guests.



興趣班 Interest Classes

病童在麥當勞叔叔之家可以不停玩、不停學，參加各種興趣班如英文班、烘焙班、瑜珈班等。

We offer a wide range of interest classes, such as English, bakery and yoga classes, for sick children and their families to enjoy a fulfilling and fun stay at the House. Mens sana in corpore sano, a healthy mind matters to a healthy physique.



親子外遊 Outdoor Activities

每年都有不同團體邀請「愛心伙伴」外遊參觀，例如到主題公園遊玩和去戲院觀看電影。

We are genuinely grateful to have various volunteer groups to invite our Love Companions to outings throughout the years. All of them enjoy their visits to theme parks and cinemas.

義工傾力支持 ♥ Volunteers support ♥



19

與「家FUN熊」走過康復路

家舍的孩子偶爾需要留院接受治療，問他們住院期間最掛念麥當勞叔叔之家的哪些事物，他們總說最掛念與義工哥哥姐姐們一起做小手工、玩遊戲、看圖書。香港麥當勞叔叔之家定期邀請義工到家舍舉辦不同活動，孩子們可玩耍學習之餘，最重要是讓他們感受到社會大眾的關愛。孩子們的話烙在心坎，想必其他久病住院的病童也很期盼義工陪伴。隨着香港兒童醫院在2019年3月開展住院服務，我們便開始推行「家FUN車」醫院探訪計劃，將麥當勞叔叔之家的大愛精神傳遞出去。

病童長期接受治療，活動範圍只能侷限於醫院或家裡，難免會感到沉悶消極。我們希望為病童住院過程注入期待和歡樂，所以特意設計了「家FUN車」- 流動玩具圖書車盛載遊戲冊、棋子、手工藝材料和玩具。「家FUN車」的設計令病童看不到車內物品，使他們每次都急不及待與義工打開「家FUN車」，一起探索車內各種玩具遊戲，發掘快樂寶藏。

病童玩得興奮之餘，「家FUN車」醫院探訪計劃亦協助他們建立康復信心。我們創作了勵志故事 - 《家FUN熊陪您玩》，並以此為計劃主題，貫穿整個探訪活動：故事講述「家FUN熊」與家人入住麥當勞叔叔之家及康復後乘坐「家FUN車」到醫院與病童成為小伙伴的經歷。戰勝病魔的「家FUN熊」和「家FUN車」在探訪活動中跳出故事書，活靈活現呈現在病童眼前，加強故事的真實感。有「家FUN熊」相伴，病童更有對抗病魔的勇氣。故事主角「家FUN熊」是由一位曾經入住麥當勞叔叔之家的家長以其過來人的心情創作，一筆一劃都滿載對病童的愛和鼓勵。

身患重疾的孩子不但需要醫療照顧，亦期待外界的關懷與陪伴。我們與南豐紗廠合作，教導愛心伙伴*、商界伙伴、香港兒童醫院的醫護人員及社區人士手工縫製了逾300隻「家FUN熊」布偶，藉「家FUN熊」喚起社會對病童的關注，以行動集愛送上祝福。再由義工送給住院病童，為他們加油打氣。每隻「家FUN熊」的表情和服飾都獨一無二，一針一線更是串聯起各界對病童的關懷。有義工探訪時看見病童把「家FUN熊」抱在懷中，家長欣慰表示：「她每晚都會摟著『家FUN熊』睡覺。」這份愛的禮物不僅安撫病童心靈，也帶給家長們一份溫暖。

「媽媽，你看！是『家FUN熊』啊！」病童興奮地指著棋子說。聖誕期間家長都會帶孩子參加派對、看燈飾或外遊慶祝。但對於病童來說，這些活動卻是遙不可及。有見及此，香港兒童醫院於聖誕節當日舉辦聖誕嘉年華，麥當勞叔叔之家被邀負責會場其中一個遊戲攤位，為病童帶來節日溫暖。「家FUN熊」化身大型棋子，陪伴病童和家長走過以患病就醫為起點、康復出院為終點的棋盤，寓意一起渡過每一個難關。

愛與祝福有無限力量。小伙伴「家FUN熊」會繼續帶著麥當勞叔叔之家的大愛精神和社會各界的關愛，乘坐「家FUN車」穿梭病房，陪伴病童走過康復之路。

*註：愛心伙伴是指曾入住家舍並已康復的小孩及其家人

Join Caring Teddy's Journey to Recovery

Children in the Ronald McDonald House® (RMH) will occasionally receive treatments in the hospital. When asked about what they miss the most about RMHC®, they would often say they miss making arts and crafts, playing games and reading with volunteers the most. RMHC routinely invites volunteers to organize different activities in the House. These activities serve to not only entertain the children, but more importantly, allow them to feel cared for by the community. Just as the children from the House enjoy the happiness these activities bring, other children in hospital may also long for companionship. To meet this need, RMHC launched the "Caring Teddy Hospitality Cart" Program in conjunction with the opening of the Hong Kong Children's Hospital in March 2019. Through the program, the caring spirit of RMHC has been able to touch more families' lives.

During hospitalization, children's activities are often confined to the hospital or their homes, which inevitably leads to low spirits. In hopes of bringing more joy to the lives of hospitalized children, we have designed the Caring Teddy Hospitality Cart- a small toy cart filled with storybooks, board games, handicraft materials and toys. Every time the cart arrives, children just cannot wait to open it and explore the games inside with volunteers, like treasure-hunters on an adventure.

Apart from entertaining the children, the Caring Teddy Hospitality Cart Program also helps build confidence in their recovery. We have created the encouraging story of "Caring Teddy" - in the story, Caring Teddy and its family move into RMHC and ride the Hospitality Cart to become the children's companion in hospital. With Caring Teddy as their companion, children are able to summon up courage to fight their illnesses. Caring Teddy was created by a parent who once lived in RMHC and was created through the lens of a loving parent, filling each brush and stroke with care and encouragement.

Through the Caring Teddy Hospitality Program, we aim to raise awareness towards the plight of children with severe chronic illnesses and show our care for them. We have collaborated with The Mills, our Love Companion volunteers*, corporate partners, healthcare professionals at the Hong Kong Children's Hospital and other community members to sew over 300 Caring Teddy stuffed toys. These stuffed toys have then been delivered to hospitalized children by volunteers, each Caring Teddy has their own unique clothes and expression, and each stitch symbolizes how different sectors have joined their hands to show their care for these hospitalized children. During later visits, one mother even told volunteers, "She hugs her Caring Teddy to sleep every night". This thoughtful present is not only a comfort to the children, but also to their parents.

"Mom, look! It's Caring Teddy!" A child exclaimed excitedly, pointing at a large Caring Teddy chess piece. During Christmas, many parents will bring their children to all kind of activities. However, this is not possible for children in hospitals. As such, the Hong Kong Children's Hospital held a Christmas party on Christmas afternoon this year. RMHC held a Caring Teddy game booth during the carnival, bringing warmth to the jolly festival. Caring Teddy was made into a giant chess piece to accompany both the children and their parents on their journey, with seeking medical care as their starting point and recovery as their end point on a large chessboard, symbolizing our support for them through all trials and tribulations.

The power of love knows no boundary. Caring Teddy will continue to accompany and support children on their road to recovery with the caring spirit of the Ronald McDonald House and the love of the community.

*Love Companions refer to those who have lived in the House, have since recovered and returned to RMHC as volunteers.

20



Daisy's Sharing Daisy's Sharing

多年前，我陪朋友到威爾斯親王醫院覆診，遇見一位家長帶兒子回癌症中心覆診。小男孩本來天真可愛的臉容被病痛折磨得十分憔悴。當時我決定將來一定要到醫院探訪病童，為他們送上祝福。當我得知悉香港麥當勞叔叔之家慈善基金在香港兒童醫院推行「家FUN車」醫院探訪計劃後，便毫不猶疑地報名成為義工，希望透過親善探訪鼓勵病童永不放棄！

香港兒童醫院的室內設計充滿生氣，病房寬敞潔淨，醫護人員溫柔友善，讓病童可以安心接受治療。除了舒適環境和醫護人員悉心照顧，病童長期對抗病魔亦需要堅強意志和愉快心境，我認為「家FUN車」醫院探訪計劃能夠帶給他們勇氣和歡樂。我們與病童說「家FUN熊」打敗病魔的故事，鼓勵他們勇敢面對疾病。每次我們陪伴病童在「家FUN車」內選擇喜愛的玩具時，他們都表現得非常雀躍。小朋友天真、精靈、開心的模樣是我做義工最大的動力。我亦很高興可以參與派發「家FUN熊」布偶活動，親手把社會各界的祝福送到他們手中。

感謝麥當勞叔叔之家令病童及家人能在「家以外的家」安心居住，祝願住院的小朋友們能早日康復出院，過著快樂生活，保持笑臉迎人！

A few years ago, I met a mother who was bringing her son back to the cancer clinic at the Prince of Wales Hospital for regular follow-up consultations while I was accompanying a friend to attend a check-up. Children at his ages should be lively, energetic and bubbly, but instead, he looked tired, weak and run-down from being tortured by cancer. At that time, I promised myself that one day, if I am given an opportunity, I will visit these hospitalized children and try my best to cheer them up. When I acknowledged that Ronald McDonald House® was launching the Caring Teddy Hospitality Cart Program at the Hong Kong Children's Hospital, I immediately signed up to volunteer.

The ward's design is bright and colorful, which could certainly light up children's mood. There are also clean and spacious rooms with friendly staff, who strive to provide adequate care for the needy children. I am sure that children will be able to receive the best care and heal better in such a comfortable environment.

It is no doubt that a pleasant environment and diligent care are essential to the children's recovery from serious illnesses; in fact, a strong will and a positive mindset are also crucial during their recovery. I believe that the Caring Teddy Hospitality Cart Program can bring them endless joy and encourage them to face the difficulties and hardships during recovery. During the visit, volunteers will read them the story of "Caring Teddy", which is about Caring Teddy defeating its life-threatening illnesses. From this story, we hope to encourage the children to face their own illnesses with bravery.

When the children got to pick out their favorite toys from the Hospitality Cart, they were all so delighted. Those smiles on their faces were priceless and motivated me to continue volunteering. In addition, I was very honored to be given a chance to help distribute the Caring Teddy stuffed toys. As it shows them that the society still cares about them.

Thank Ronald McDonald House so much for providing a nice and beautiful temporary home for these children and their families, so that the children could heal better in a much more comfortable and loving environment. I wish these children can have a fast recovery, so that they can enjoy a life filled with joy and happiness.



籌款活動一覽 Fund Raising Activities



「愛深似海」慈善餐舞會 "OCEAN OF LOVE" Gala Dinner

2019年慈善餐舞會於10月19日在香港海洋公園萬豪酒店舉行。活動為香港麥當勞叔叔之家其中一個大型年度籌款活動。餐舞會在各善長仁翁鼎力支持下共籌得超過500萬港元，所得善款令麥當勞叔叔之家可以繼續為病童及其家人提供優質的「家以外的家」服務。當晚活動主題為「愛深似海」，不少義工及來賓均穿上海洋主題服飾，全情投入。我們更邀得香港知名女歌手陳潔靈小姐現場獻唱，令餐舞會星光熠熠，大家拍手唱和，把全場氣氛推至最高峰！

We are delighted to share with you the joyful moment of our annual Gala Dinner, which was successfully held on 19 October 2019 at the Hong Kong Ocean Park Marriott Hotel. Gala Dinner is one of our largest annual fundraising events; with the generous support from our donors and sponsors, it had raised over 5 million Hong Kong dollars to support the cost for seriously ill children and their families to stay at Ronald McDonald House®. With the theme of "Ocean of Love", guests were creative on their outfit. It was a fun and love-filled night. One of the most beloved singers in Hong Kong, Ms. Elisa Chan, presented a wonderful music performance. All guests sang and clapped along, bringing the event to the peak!





第22屆香港麥當勞叔叔之家慈善基金慈善高爾夫球賽 The 22nd Annual RMHC® Hong Kong Charity Golf Tournament

於深圳觀瀾湖高爾夫球會舉行的高爾夫球賽2019今年已屆22周年，共有16支隊伍參加比賽。是次活動籌得之善款將用於支持香港麥當勞叔叔之家慈善基金的服務，為病童及其家人提供一個「家以外的家」，讓他們能夠安心對抗病魔。

Golf Tournament 2019, which was held at Mission Hills Golf Club, Shenzhen marked the 22nd anniversary of the event. This year, 16 teams of golfers participated and their donations supported RMHC Hong Kong to provide sick children and their families a "home-away-from-home".



第19屆香港麥當勞叔叔之家慈善基金獎券義賣活動 The 19th Annual RMHC® Hong Kong Charity Raffle Ticket Sale

慈善獎券義賣是香港麥當勞叔叔之家慈善基金一年一度的大型籌款活動，今年已踏入第19屆。為期兩個月的活動能取得成功，實在有賴不同義工團體及商業機構的鼎力協助，義賣獲得廣大市民的慷慨支持，令本年度籌得超過120萬港元。籌得之善款將為香港麥當勞叔叔之家的病童及他們的家人繼續提供優質服務。

Stepping into its 19th year, Charity Raffle Ticket Sale is the signature annual fundraising activity of Ronald McDonald House Charities. The two-month event could not be so successful without the unconditional assistance from various voluntary groups, commercial organizations as well as the generous support from the public. Over HK\$1,200,000 has been raised this year, and will go to support our quality services for seriously sick children and their families staying at the Ronald McDonald House® Hong Kong.



2018-2019 讀樂樂·顯愛心閱讀計劃 2018-2019 Read for Love

為培養兒童的閱讀習慣及公民責任，香港麥當勞叔叔之家慈善基金過去多年均舉辦「讀樂樂·顯愛心閱讀計劃」，得到不少學校、家長及同學支持。今年亦不例外，超過5,000位同學參與「2018-2019 讀樂樂·顯愛心閱讀計劃」，頒獎禮於7月13日圓滿結束，頒發獎項包括愛心閱讀學校、愛心閱讀大使及卓越學生獎。計劃通過鼓勵小朋友自訂閱讀目標，同時為家舍日常運作籌款，支持病童及其家庭渡過人生難關。

To help children establish a reading habit and civic responsibility, we have organized "Read for Love" reading program in the past years and gained evident support from schools, parents and students. There is no exception for this year. Over 5,000 students participated in "2018-2019 Read for Love", and the awards of Most Well-Read Schools, Most Well-Read Students and Most Well-Read Students in Schools were presented in the prize presentation ceremony on July 13. Through encouraging children to set up reading goals as well as raising funds for the House, the program offers valuable donation for the daily operation of the House in order to accompany those families with sick children to face the great challenge in life.



『球+緣』主辦慈善高爾夫球賽 Charity Golf Tournament by Home of Golf Friendship

由「球+緣」高球隊（義工團）主辦、Eagle Club Golf Team協辦的高爾夫球慈善賽於5月31日在香港高爾夫球會順利舉行。25隊參賽隊伍參與賽事籌款，提升家舍服務，為病童提供一所更舒適的臨時家園。

Organized by the Voluntary Team of the Home of Golf Friendship and co-organized by Eagle Club Golf Team, the Charity Golf Tournament was successfully held on May 31 at Hong Kong Golf Club. 25 teams joined the activity and raised fund for the house service and provide a more comfortable temporary shelter for the sick children.



麥當勞 齊心行善 將愛心獻給麥當勞叔叔之家慈善基金
 McDonald's Supports Ronald McDonald House Charities®



自香港麥當勞成立而來，一直秉持「齊心共好」的核心精神，不遺餘力地支持「麥當勞叔叔之家慈善基金」，希望藉此回饋社會，實踐企業社會責任。麥當勞多年來積極舉辦不同活動，例如籌款和探訪等，為患病兒童及其家人送上關懷與祝福。

「麥當勞兒童愛心馬拉松」是其中一個最具標誌性的籌款活動，至今這個城中大型親子活動已成功舉辦了13屆，凝聚社會各界和全港家庭的愛心力量，一同實踐「愛跑·愛世界」及「小朋友幫助小朋友」的信念，把愛傳遞開去。多年來活動均得到眾多企業夥伴與大朋友、小朋友的歡迎和肯定。大家齊集跑馬地馬場，透過一起運動，以行動支持「香港麥當勞叔叔之家」，宣揚互助精神。麥當勞亦多次邀得愛心滿溢的樂壇天后容祖兒小姐擔任「兒童愛心馬拉松大募集隊長」，親身落場，聯同Ronald & Friends、一眾商台節目主持及各界善長帶領全場數千名大、小健兒熱身和為大家打打氣，同時象徵「香港麥當勞叔叔之家」一直愛不停步，為病童及其家人提供溫暖的「臨時家園」，減低他們的生活壓力。

社會各界對過去13屆「麥當勞兒童愛心馬拉松」反應熱烈，活動總參與人數高達6萬人，多年來總共為基金籌得逾4,800萬港元善款。有賴每一位善長的熱心捐獻，成功吸引大批參加者為基金出力。香港麥當勞將繼續大力支持「麥當勞叔叔之家慈善基金」，呼籲更多人關注病童需要，讓基金作更長遠的持續發展。

麥當勞叔叔之家亦是香港麥當勞義工隊多年來的服務對象之一。義工隊除了每年鼎力支持「麥當勞兒童愛心馬拉松」外，一眾充滿愛心的義工更會不時到麥當勞叔叔之家進行探訪，以行動向病童送上關懷。



McDonald's® Hong Kong has been committed to giving back to the community and fulfilling its corporate social responsibility ever since its establishment. McDonald's Hong Kong has always supported sick children and their families through Ronald McDonald House Charities® (RMHC) on various fundraising activities and visits.

充滿愛心的香港麥當勞義工隊會籌辦不同活動關懷病童，不時探訪麥當勞叔叔之家，以行動向病童送上關懷。

The McDonald's Hong Kong Volunteer team has always been enthusiastic in organizing various activities for child patients at Ronald McDonald House. They organize parties, tell stories and play games with the children at this "home-away-from-home"

The "Kidathon", one of the most significant mega fundraising events organized by McDonald's Hong Kong, has been held for 13 years in Hong Kong. The event invites local families to promote "Run for Fun, Run for Love" and the spirit of "kids helping kids". Over the years, the event was held successfully and received overwhelming responses from McDonald's business partners and local families. Thousands of participants run together at Hong Kong Jockey Club Happy Valley Racecourse, where they embrace the spirit of helping each other. As the Kidathon Ambassador for many years, kind-hearted and well-known singer Joey Yung is joined at the event by Ronald & Friends and a group of Commercial Radio Hong Kong participants who cheer on the runners. She also leads the participants in various activities such as running on-the-spot, symbolizing RMHC's unflinching efforts in providing sick children with a "home-away-from-home".

Thanks to the support of the community and business partners over the years, the Kidathon has raised over HK\$48 million for RMHC and more than 60,000 people have participated in the event. In the future, McDonald's will continue to support RMHC in raising public awareness of the needs of sick children and foster the charity's long-term development.

Apart from Kidathon, the McDonald's Hong Kong Volunteer team regularly visits sick children at Ronald McDonald House®, creating happy moments and bringing joy to the children.



香港麥當勞行政總裁黎韋詩小姐、香港麥當勞叔叔之家慈善基金董事會主席暨全球麥當勞叔叔之家慈善基金董事會委員黃馮慧芷女士多年來率領一眾健兒發揮愛心力量，一起「愛跑·愛世界」。

The Kidathon attracts thousands of runners. Ms. Randy Lai, CEO of McDonald's Hong Kong and Ms. Grace Fung Oei, RMHC Global Board of Trustees & Ronald McDonald House Charities Hong Kong Chairperson, cheered the participants' charitable efforts at the starting point.



香港麥當勞餐廳均設有「麥當勞叔叔之家慈善基金」捐款箱，多年來有賴社會人士的慷慨捐款，2019年度於各餐廳一共收到超過340萬港幣善款。

Anyone can make a donation at any McDonald's Restaurant via RMHC donation boxes. McDonald's received approximately HK\$3.4 million in donations for RMHC in 2019.

名人支持 Celebrities' Support



名人支持 提升公眾認知 Celebrities' Support to Raise Public Awareness

邀請名人出席和支持活動能加深大眾對我們的認識，藉以鼓勵更多有心人捐款。我們一向積極邀請本地名人參與不同活動。多位藝人於2019年應邀參與香港麥當勞叔叔之家慈善基金的不同活動。許懷欣先生、胡定欣小姐、陳凱琳小姐和蕭正楠先生均親臨探訪病童，岑麗香小姐則出席了獎券義賣活動的啟動禮，以支持香港麥當勞叔叔之家慈善基金的籌款活動。

Through the support of celebrities, we can reach out widely to the public and enhance their understanding of the House so as to encourage more donations. We have actively invited local celebrities to participate in various events. In 2019, Mr. Ryan Hui, Ms. Nancy Wu, Ms. Grace Chan and Mr. Edwin Siu visited our House, while Ms. Eliza Sam was present at the kick-off ceremony of Raffle Ticket Sale to show support to our fundraising activities.



感謝各方支持 Acknowledgement of Support



Donation of HK\$100,000 or above

Cheung Tih Loh, Karen Grace & Kendall Oei Linda Lau

Donation of HK\$50,001 to HK\$99,999

Chandler Grace Sung Siang	Florence C.Y. Lee	Justin Cheung
Chandler Michael Lee	Ho Chui Peng, Michelle	Leung Oi Ching
Christian E Oei	Jessica Cheung	Tsang Chun Keung Peter

Donation of HK\$10,000 to HK\$50,000

Alice & Billy Siu	Helen Chan Chung Lan	Rebu Hui
Anna Chow Suk Han	Ho Kwan Hung Peter	Robert Le Roy Vallone
Au-Yueng, Tai Hong Rorce	Hui Shi Man Michelle	Samantha & Spencer Choy
Chan Chi Fan & Fong So Ping	Kam Cheong Stanley Wat	Tam Wing Kei
Chan Mei Wan	Kam Heung Wah	Tam Yuet Mei
Chan Ying Yu	Kim Lamsam	Tang Sai Kong Simon
Chen Wai Wai, Vivien	Kung Wan Ho	Tang, Darius Chung Yin
Cheung Wai Hing	Lai Ka Chung	Timothy John Tsang
Cheung Yee Wan	Lai Lim Chun	Tom J Forrer
Cheung Yuen Tak	Lau Ka Shi Betsy	Valerie & Darrell Wong
Cheung, Vanessa Tih Lin	Lee Ting Kong John	Vicki Hui
Chiu Bo Lan	Leung Ting Fan	Wong Chi Chung
Chiu Hui Ying	Liang-Lin Chen	Wong Lai Fan
Choi Kam Ping	Lo Hing Tak, Eric	Wong She Lui Sharon
Choy Jing Man Ian	Ma Chi Ho Laurence	Wong Tak Shun, Nelson
Ezra Pau	Mak Wing Kwong Tony	Wong Tsz Fung
Fong Wai Man	Marc Convery &	Wong Wah Bong
Gloria Cheung	Robyn Lamsam Convery	Wong Yuet Leung
Harilela Aron Hari	Michael Nai	Woo Huey Fang
Hau Wa Kin	Ng Chi Kwan Stephen	葉靜燕

In Kind Donation of HK\$5,000 or above

Chan Wai Yin Elizabeth	Linda Lau	楊展衡
Cheung Ka Long	Moon Lau Pui Yuet	楊燕珊
Doris Choi	Ms. Cheung	胡瑞嬌
Eileen Chan	Ms. Yung	譚清蘭
Eva Cham	Robert Le Roy Vallone	陳啟明
Gloria Cheung	Wendy Kwok	陳培亮
Grace & Kendall Oei	Wong Fook Lam, Raymond	陳球
Heson	Woo Yat Pong	陳穎儂
Jacinto S Cua	曾玉蘭	麥桂才 & 曾美珠
John Ho	朱艷芳	黃鎮鋹
Lai Ni Jan	林美宜	黎汝遠

機構捐助 Corporate Donors

Donation of HK\$100,000 or above

China CITIC Bank International Limited
CITIC Capital Charitable Foundation Limited
CITIC Capital Partners Management Limited
HAVI
McDonald's Hong Kong
McDonald's Macau
Mckey Food Services (Hong Kong) Limited
Providence Foundation Limited

SOCAM Development Limited
SOGO Hong Kong Company Limited
The Chen Wai Wai Vivien Foundation Limited
The Marketing Store
The Yao Yuan Sze Foundation
Tyson & McKey
Vervain Resources Limited
WE Solutions Limited

Donation of HK\$50,001 to HK\$99,999

Chee Wah (China) Toys Limited
Combine Will Industrial Company Limited
Dream International Limited
GFT Group Limited
Graceland Entertainment Limited
Griffith Foods Limited
Hing Lin International Printing Co., Limited

Keyhinge Enterprises (Macao Commercial
Offshore) Company Limited
Lan Kwai Fong Group
New World Group Charity Foundation Limited
Technical Model Design Limited
The Marketing Store Worldwide Asia Limited
Wai Hing Industrial (Hong Kong) Company Limited
Weebo Corporation Limited

Donation of HK\$10,000 to HK\$50,000

Ampco Lighting Limited
BAMA China
C F L Enterprise Limited
Cargill
Cargill Animal Protein (Chuzhou) Co. Ltd.
China Overseas Holdings Limited
Choy Hung Decoration Company
Citybase Property Management Limited
Coca-Cola China Limited
Cosmos Team Eng. Limited
Danny Cheng Interiors Limited
DDB Group Hong Kong
Ecolab Limited
Elkay Interior Systems Hong Kong Limited
Emperor Foundation
Eternal East Cross Border Coach
Management Limited
Excel Best Toys Limited
Forever Chemers Limited
Globe Printing & Polybag Limited
Great Kingdom Enterprises Limited
HAVI Freight Management Limited

HKLL To Shek Cup 2019
Hong Kong Baptist Convention Primary School
Alumni Association
Hong Kong Health Check & Medical Diagnostic
Centre Limited
Hong Kong Little League Limited
Hoyu Tooling Limited
Hung Hing Off-Set Printing Company Limited
In Express-Sisters Group Limited
Kingwell Construction &
Engineering Company Limited
Kitcheng Limited
Klarenken Enterprise Limited
Lap Chi Moulding Company Limited
Limelite Company Limited
LMHK Consultant Limited
Lopez Foods
Manulife (International) Limited
New Island Printing Company Limited
ONC Lawyers
Oriental Engineering Company Limited
Por Yen Charitable Foundation Limited

Donation of HK\$10,000 to HK\$50,000

PrimeCredit Limited
Pro-Tooling (Hong Kong) Limited
Prudential International Moving Limited
Quo Pro Limited
Right Source Premium Manufacturing Limited
Robiff Trading Company Limited
Shiner Limited
Sin Nung Toys Limited
Standard Chartered Bank (Hong Kong) Limited
Tak Wah Touring Limited
The Marketing Store Worldwide (Hong
Kong) Limited
Top Smarties Limited
UA Cinema Circuit Limited
Valuables Corporation Limited

Vander Engineering Limited
Vigor Toys Limited
Wilds Company Limited
一鳴建築機械有限公司
中國海外愛心基金會有限公司
亦通國際物流有限公司
嘉和公司
富臨飯店(1977)有限公司
明發冷氣有限公司
福德學社小學
群力機電(亞洲)有限公司
聯明坪山冷氣製品廠有限公司
華順工程有限公司
錦龍電腦綉花有限公司

In Kind Donation of HK\$5,000 or above

A.R. Medicom Inc. (Asia) Limited
Agenda Bar and Restaurant
Amorepacific Hong Kong Co. Limited
ARTÉ Madrid
Bo Innovation
Chung Hing Restaurant
City Chamber Orchestra of Hong Kong
Citybase property Management Limited
Coca-Cola China Limited
Combine Will Industrial Company Limited
ConAgra Foods
Dream Impact
Ecolab Limited
Elite Makeup
Fencing Sport Academy
Forum Restautant
Galaxy Entertainment Group
Global Wine Cellar Limited
Harilela Hotels Limited
HAVI
hEat
Highland Park Single Malt Scotch Whisky
Hing Lin International Printing Co., Limited
HK Descente Trading Limited
Hong Kong Airline
Hong Kong Gold Coast Hotel
Hong Kong Ocean Park Marriott Hotel
Hung Hing International Printing Company Limited
Hyatt Regency Hong Kong, Sha Tin
Kee Wah Bakery
Keyhinge Enterprises (Macao Commercial
Offshore) Company Limited

Lan Kwai Fong Entertainments
LEGO
Lindt
Liverpool FC International Academy (Hong Kong)
MA CHÉRIE
Mars Company Hong Kong Limited
MELCO RESORTS & ENTERTAINMENT LIMITED
MHK Restaurants Limited
Mustela
New Island Printing Group Company Limited
New World Development Company Limited
Ocean Park Corporation
ONC Lawyers
S.C. Johnson Limited
Salonpas
Sang Kee Restaurant
SENKA
SOGO Hong Kong Company Limited
Sun Hing Printing Company Limited
Swire Coca-Cola HK
Talent Alpha Limited
The Park Lane Hong Kong, a Pullman Hotel
The Peninsula Hotels
The Ritz - Carlton, Hong Kong
The Walt Disney Company (HK)
Tsit Wing Coffee Co., Limited
UA Cinema Circuit Limited
YGM group
建益(香港)有限公司



財務概覽 Statement of Financial Position

損益及其他綜合收入報表

Statement of Profit or Loss and Other Comprehensive Income

截至2019年12月31日止年度	Year ended 31 Dec 2019	2019 HK\$	2018 HK\$
收益	INCOME		
籌款活動	Fundraising activities	4,529,604	6,043,865
公眾捐款	Contributions and donations from the public	4,787,041	5,462,860
獎券義賣	Sale of raffle tickets	1,296,042	1,428,902
贊助收益	Sponsorship income	1,315,774	1,303,195
其他營運收益	Other operating income	9,948,859	12,051,258
銀行利息收入	Bank interest income	2,420,769	1,460,233
通過其他綜合收益以公允價值計量的股權投資收益	Dividend income from equity investments at fair value through other comprehensive income	234,764	210,321
按攤餘成本計量的債務工具的利息收入	Interest income from debt instruments at amortised cost	-	65,219
香港賽馬會撥款 (附註一)	Funding from Hong Kong Jockey Club (Note 1)	4,048,846	-
外匯收益淨額	Foreign exchange gains, net	-	722,585
		28,581,699	28,748,438
營運支出 (附註二)	OPERATING EXPENSES (Note 2)		
服務及項目支出	Service and programme expenses	(8,016,836)	(5,963,803)
籌款支出	Fundraising costs	(2,278,936)	(2,106,897)
行政支出	Administrative expenses	(1,860,701)	(1,582,593)
折舊	Depreciation	(2,281,405)	(2,290,771)
香港政府 - 地稅及差餉	Hong Kong Government - crown rent and rates	(219,560)	(215,420)
項目支出	Project expenses	(442,260)	(1,428,760)
銀行費用	Bank charges	(18,682)	(13,077)
		(15,118,380)	(13,601,321)
其他支出	OTHER EXPENSES		
外匯虧損淨額	Foreign exchange losses, net	(54,634)	-
		(54,634)	-
年度盈餘	SURPLUS FOR THE YEAR	13,408,685	15,147,117
其他全面收益	OTHER COMPREHENSIVE INCOME		
將不會在財政年度完結以後的損益重新分類的其他綜合收益：	Other comprehensive income that will not be reclassified to profit or loss in subsequent periods:		
通過其他綜合收入以公允價值計量的股權投資收益	Equity investments at fair value through other comprehensive income:		
	Changes in fair value	219,654	275,264
年度全面收益總額	TOTAL COMPREHENSIVE INCOME FOR THE YEAR	13,628,339	15,422,381

財務狀況報表 Statement of Financial Position

於2019年12月31日	31 Dec 2019	2019 HK\$	2018 HK\$
非流動資產	NON-CURRENT ASSETS		
物業，設備及器材	Property, plant and equipment	42,927,494	38,359,824
通過其他綜合收入以公允價值計量的股權投資	Equity investments at fair value through other comprehensive income	6,669,351	6,449,697
公用事務按金	Utility deposits	85,100	85,100
非流動資產總額	Total non-current assets	49,681,945	44,894,621
流動資產	CURRENT ASSETS		
其他應收款項	Other receivables	1,386,548	687,830
預付款項	Prepayments	23,800	3,899
現金及現金等價物	Cash and cash equivalents	120,664,800	111,703,133
流動資產總額	Total current assets	122,075,148	112,394,862
流動負債	CURRENT LIABILITIES		
應付關連公司款項(附註三)	Due to a related company (Note 3)	36,540	80,317
其他應付款項及應計款項	Other payables and accruals	1,558,497	675,449
		1,595,037	755,766
流動資產淨值	NET CURRENT ASSETS	120,480,111	111,639,096
總資產淨值	NET ASSETS	170,162,056	156,533,717
由以下代表儲備(附註四)	REPRESENTED BY: Reserves (Note 4)	170,162,056	156,533,717

附註一：
由香港賽馬會提供的資金只用於興建第二所麥當勞叔叔之家。

附註二：
所有董事會成員均以義務性質參與，並無收取報酬。

附註三：
應付關連公司款項：MHK Restaurants Limited 代表麥當勞叔叔之家慈善基金有限公司在餐廳收集善款，並會定期將善款交回慈善基金。該筆善款在財政年度完結後已全數交回慈善基金。

附註四：
本慈善基金正在籌備各項擴展服務計劃。部分盈餘已撥入此儲備，限制作其他用途。

Note 1:
The funding from The Hong Kong Jockey Club was solely for construction costs of the second Ronald McDonald House.

Note 2:
All Board Members are volunteers and receive no remuneration for their services in supporting the Charity.

Note 3:
Due to a related company: MHK Restaurants Limited collects donations at its restaurants on behalf of RMHC and settles the fund to RMHC on a regular basis. The balance had been fully settled subsequent to the end of the reporting period.

Note 4:
RMHC is considering various service expansion projects. Portions of the surplus has been transferred to a reserve fund for these projects which is restricted as to use.



支持我們 Support Us

捐款者資料 Donor's Information

公司 / 團體 / 個人名稱
Company/Organization/Name _____

聯絡人
Contact Person _____ 先生 / 女士 / 小姐 職位
Mr. / Ms. / Miss. Title _____

地址
Address _____

電話
Tel. _____ 傳真
Fax _____

電郵
Email _____ 日期
Date _____

如收據抬頭與上述公司/個人名稱不同, 請註明:
If the name of the receipt is different from the company/personal name, please state: _____

- 捐款港幣\$100或以上可申請扣稅。Donations of HK\$100 or above are tax deductible

捐款金額 Donation Amount

(請在適當圖格內加上✓號 Please tick where appropriate)

- 我願意單次捐款 I would like to make an one-off donation
- HK\$5,000 HK\$1,000 HK\$300 HK\$200 HK\$100 其他金額 Others amount HK\$ _____
- 為節省行政開支, 我不需要捐款收據 To save administration costs, no donation receipt is required

捐款方法 Donation Method

- 直接存款或轉賬至「麥當勞叔叔之家慈善基金有限公司」銀行戶口
Direct deposit/transfer to the **Ronald McDonald House Charities Hong Kong Limited.**
- | | | |
|------|-------------------------|----------------|
| 渣打銀行 | Standard Chartered Bank | 447-1-060619-5 |
| 匯豐銀行 | HSBC | 067-450999-292 |
- 劃線支票 (抬頭請寫「麥當勞叔叔之家」或「麥當勞叔叔之家慈善基金有限公司」)
Cheque payable to "RMHCHK" or "Ronald McDonald House Charities H.K. Ltd."
請將劃線支票寄回沙田多石村多石街23號 Please send to 23 To Shek Street, To Shek Village, Shatin

- 支付寶香港 電子錢包 AlipayHK electronic wallet



請保留「支付寶香港」之確認捐款記錄, 並電郵或傳真給我們, 以便發出正式收據
Please keep "AlipayHK" confirmation payment records and send to us by email or fax for an official receipt

- 信用卡 Credit Card (信用卡捐款者可郵寄或傳真此表格至2947 8780。)
(For credit card donation, please send this form to us by mail or by fax to 2947 8780)

- Visa Master Card American Express

信用卡號碼
Credit Card No. _____ 有效日期至
Expiry Date _____

持卡人姓名
Cardholder's name _____ 持卡人簽署
Cardholder's signature _____

注意事項: 所收集的個人資料將保密處理。作為寄發收據及通訊之用, 如不欲收取本機構資訊 / 需查詢或更改個人資料, 請與我們聯絡
電話: 2947 8778 傳真: 2947 8780 電郵: rmh@rmhc.org.hk

Note: The personal data collected will be treated as strictly confidential and will be used only for receipting and other communications with you. If you do not wish to receive any mailings from us, or if you want to have access to or change your personal data, please contact us.

Tel: 2947 8778 Fax: 2947 8780 Email: rmh@rmhc.org.hk

